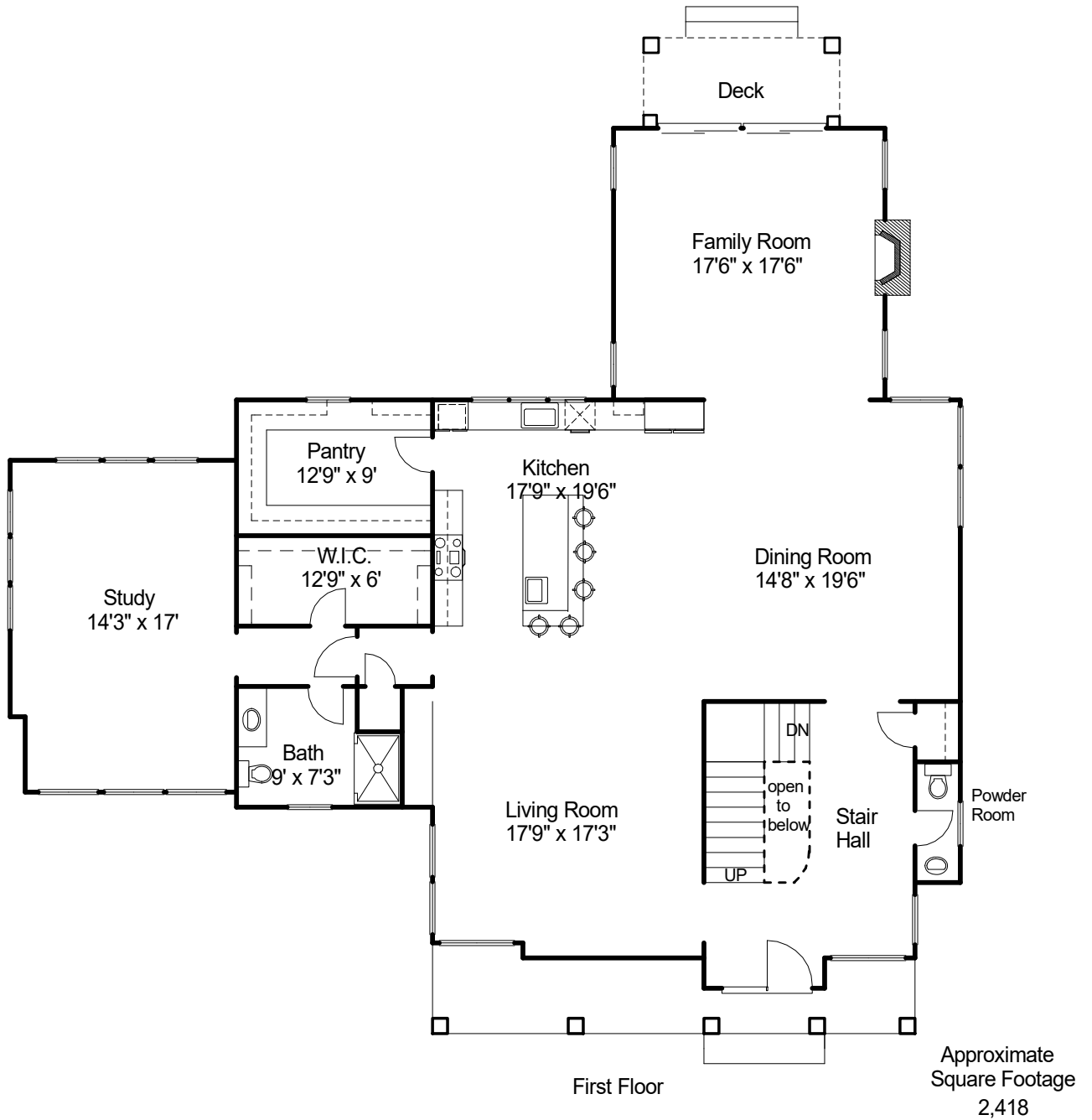


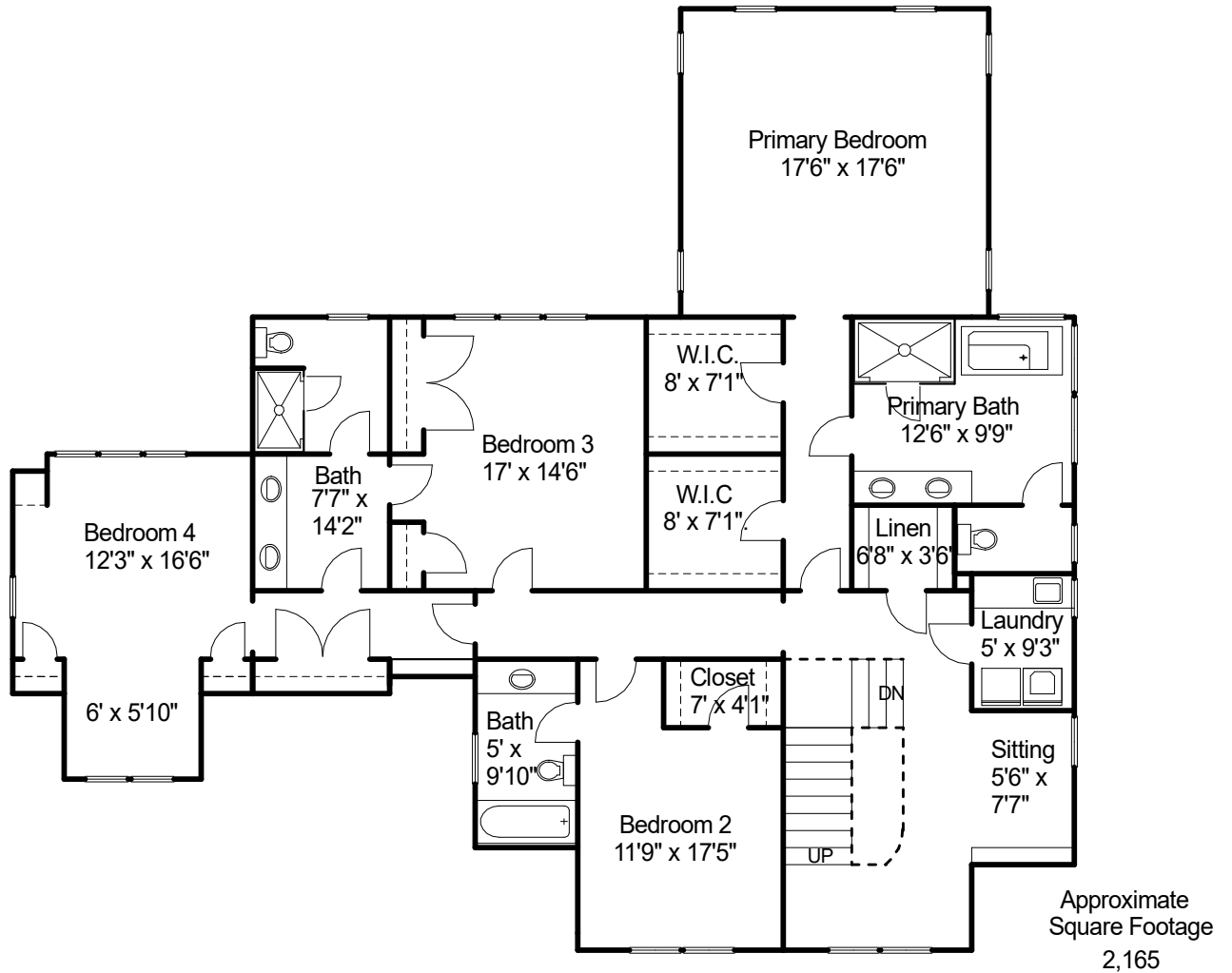
10 Linc Cole Lane, Lexington, Massachusetts



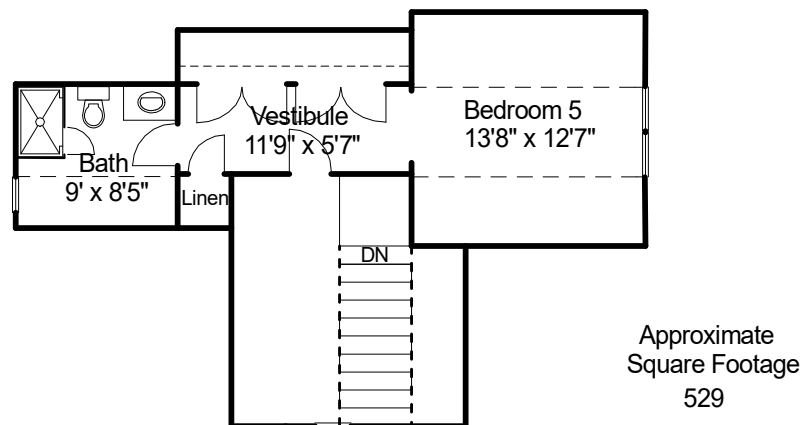
prepared for:
Elizabeth Crampton Charles Lock
(781) 389-4400 (781) 910-7980
Coldwell Banker

Renderings
Kathleen Murillo
(978) 549-3671
approximate measurements
© 2025

10 Linc Cole Lane, Lexington, Massachusetts



Second Floor

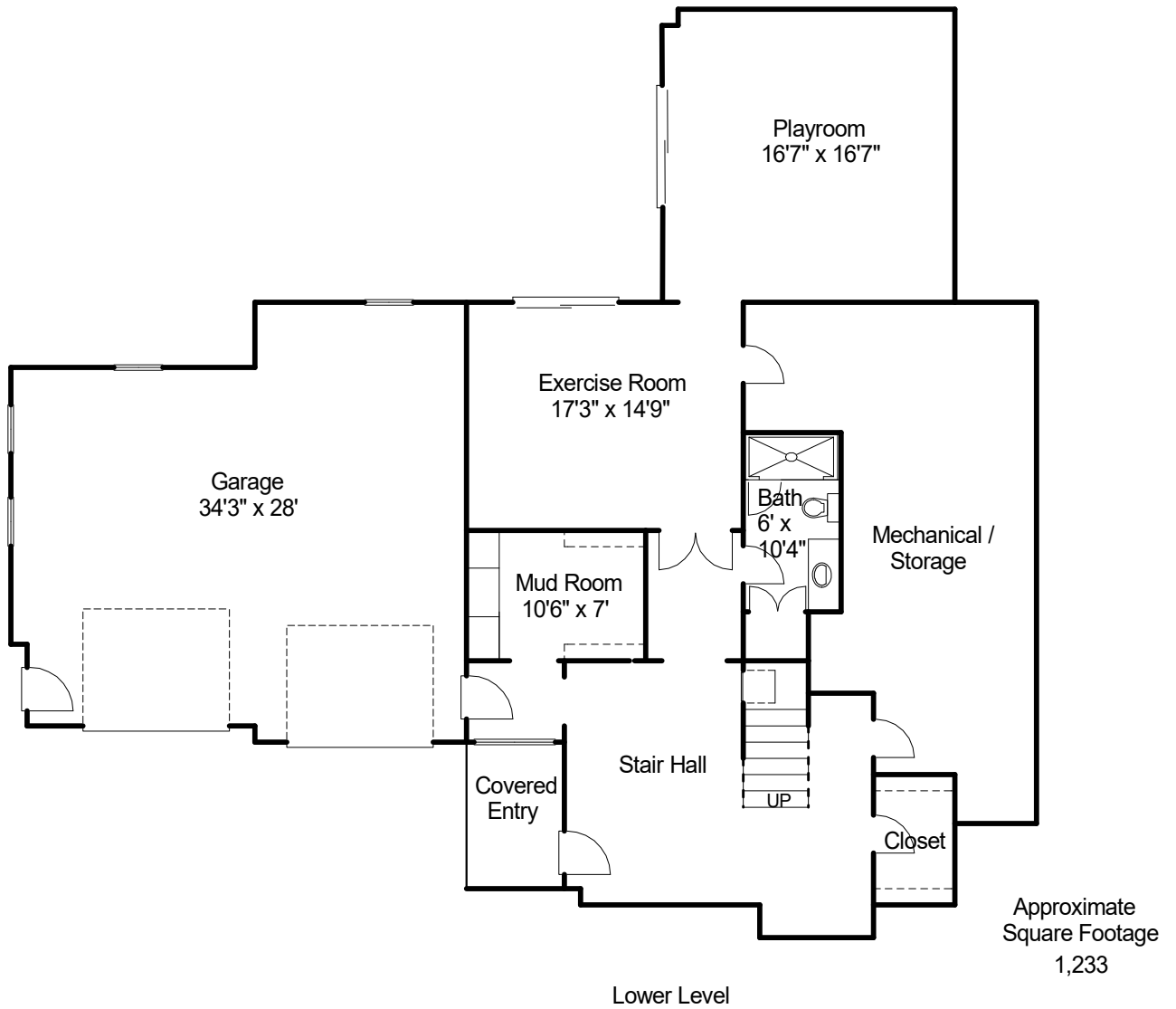


Third Floor

prepared for:
Elizabeth Crampton Charles Lock
(781) 389-4400 (781) 910-7980
Coldwell Banker

Renderings
Kathleen Murillo
(978) 549-3671
approximate measurements
© 2025

10 Linc Cole Lane, Lexington, Massachusetts



prepared for:
Elizabeth Crampton Charles Lock
(781) 389-4400 (781) 910-7980
Coldwell Banker

Renderings
Kathleen Murillo
(978) 549-3671
approximate measurements
© 2025